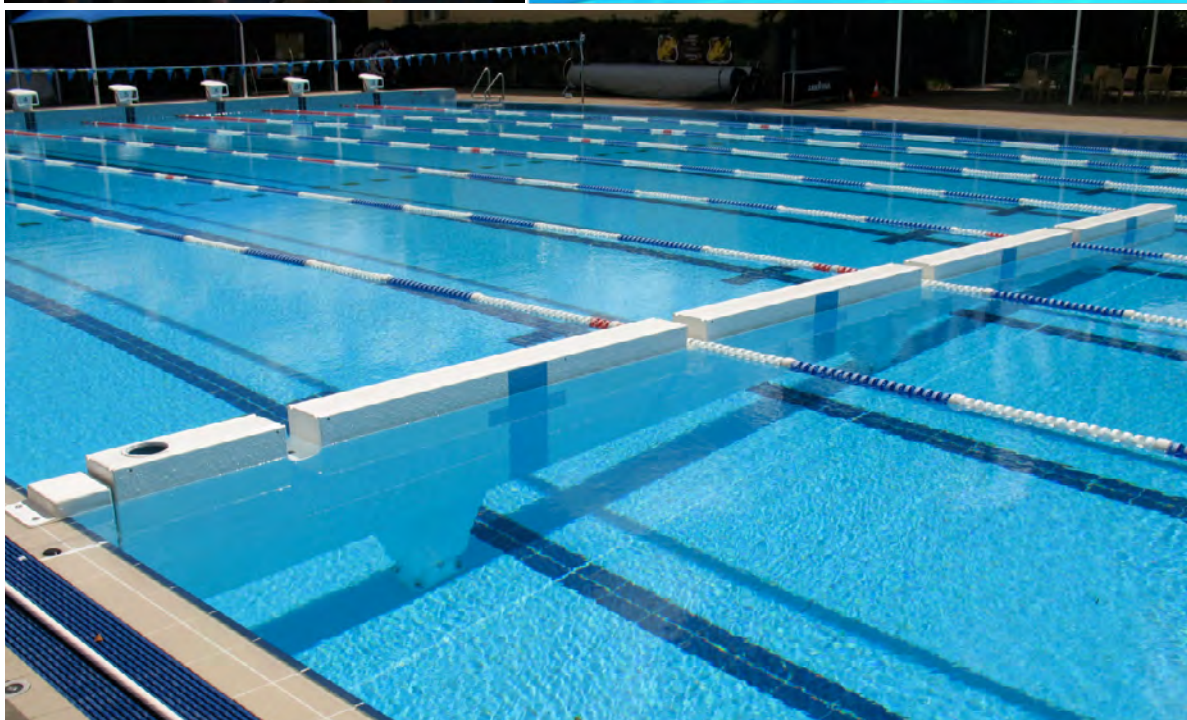
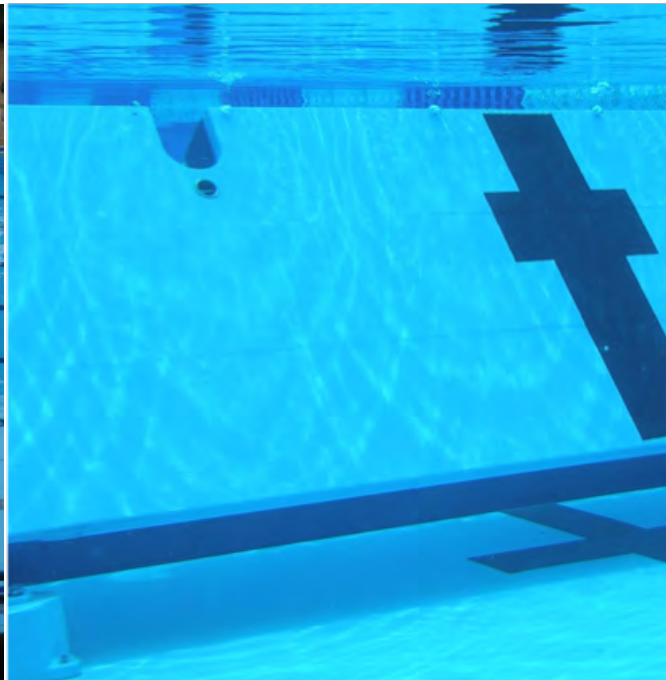




ANTI WAVE 2016 Submersible SwimWalls



- Program Flexibility and Diversification
- Maximum Revenue Optimisation
- Australian Design. Durable, Non Corrosive Materials
- Composite Resin Infusion Production



Submersible SwimWall

The Anti Wave Submersible Swimwalls are narrow Fibreglass sections that are anchored to the pool floor, and raised by internal floatation and locked into an upright position when required.

A more conventional horizontally movable boom requires a lengthening of the pool length. The SwimWall section(s) divide the pool length into two halves while avoiding the need for lengthening as they sit on the pool floor, or a rebate into the pool floor.

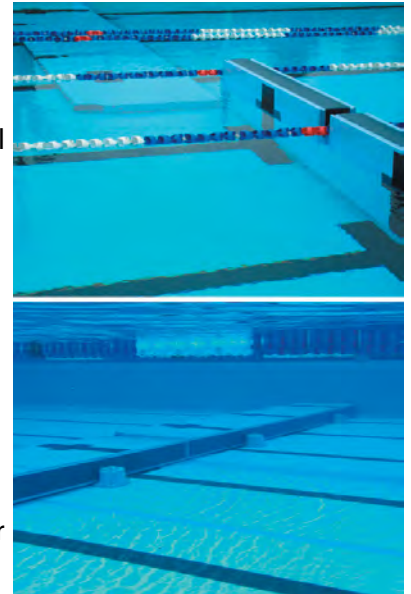
The SwimWall is then locked into the upright position against the pool side via a locking mechanism. The ability to span either half or all of the pool means even greater flexibility for pool programming.

The Submersible Swimwall is produced from FRP with internal bouyancy to permit manual operation using supplied air lines. Vertical walls of the bulkhead are supplied with target markings in accordance with Fina regulations.

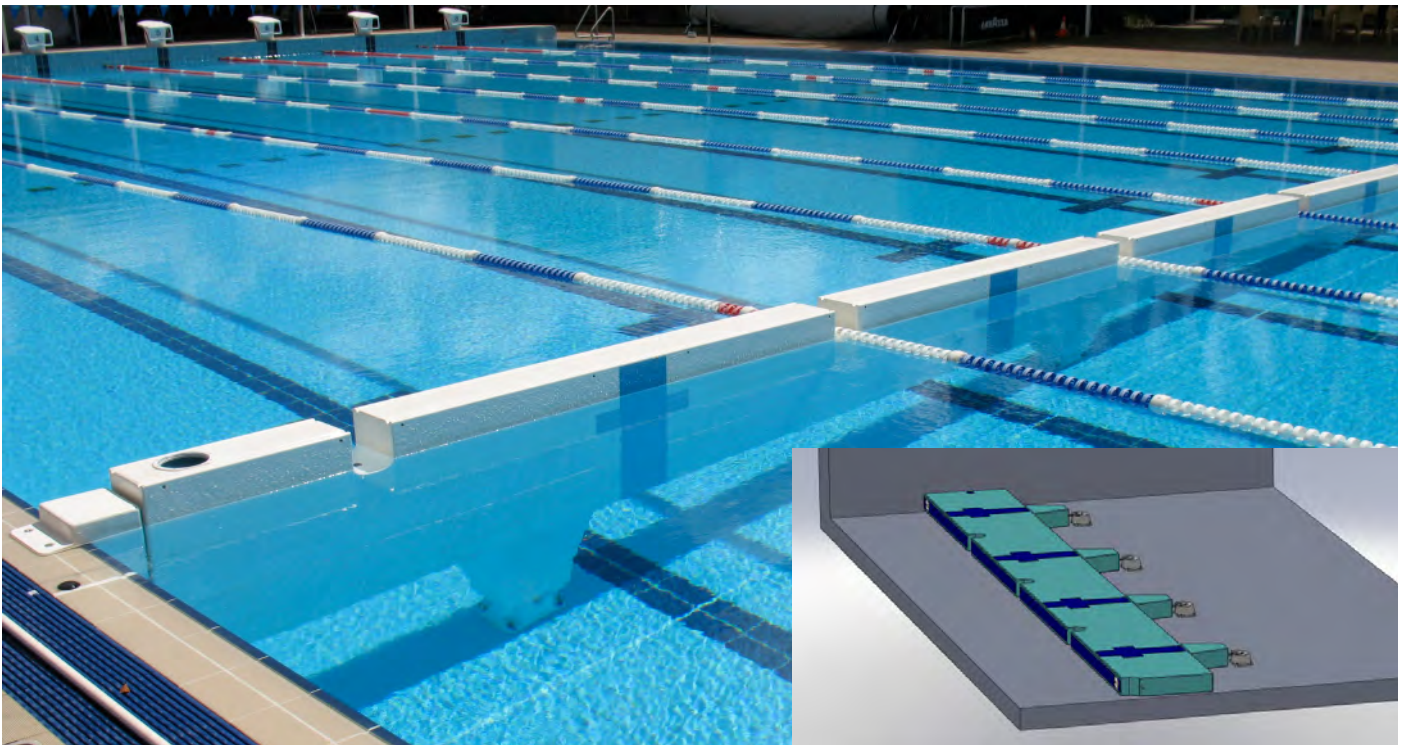
Provision is made for lane ropes to pass through the bulkhead as required, and for the connection of lanes to the Swimwall if needed.

The SwimWall is operated by one person, and when upright locking pins at the outer end of each section are manually slid into receiving wall sockets.

Locked in 'up' position



In 'down' position on pool floor



Brisbane Valley Pool, Australia • Anti Wave Submersible Bulkead in 'up' locked position

Submersible SwimWall

To understand your options please review our three most requested configurations:

Configuration 1/ Two SwimWalls - each two lanes in width.

TWO SwimWalls, both '2 Lanes Wide' and each fixed to each side of the pool.

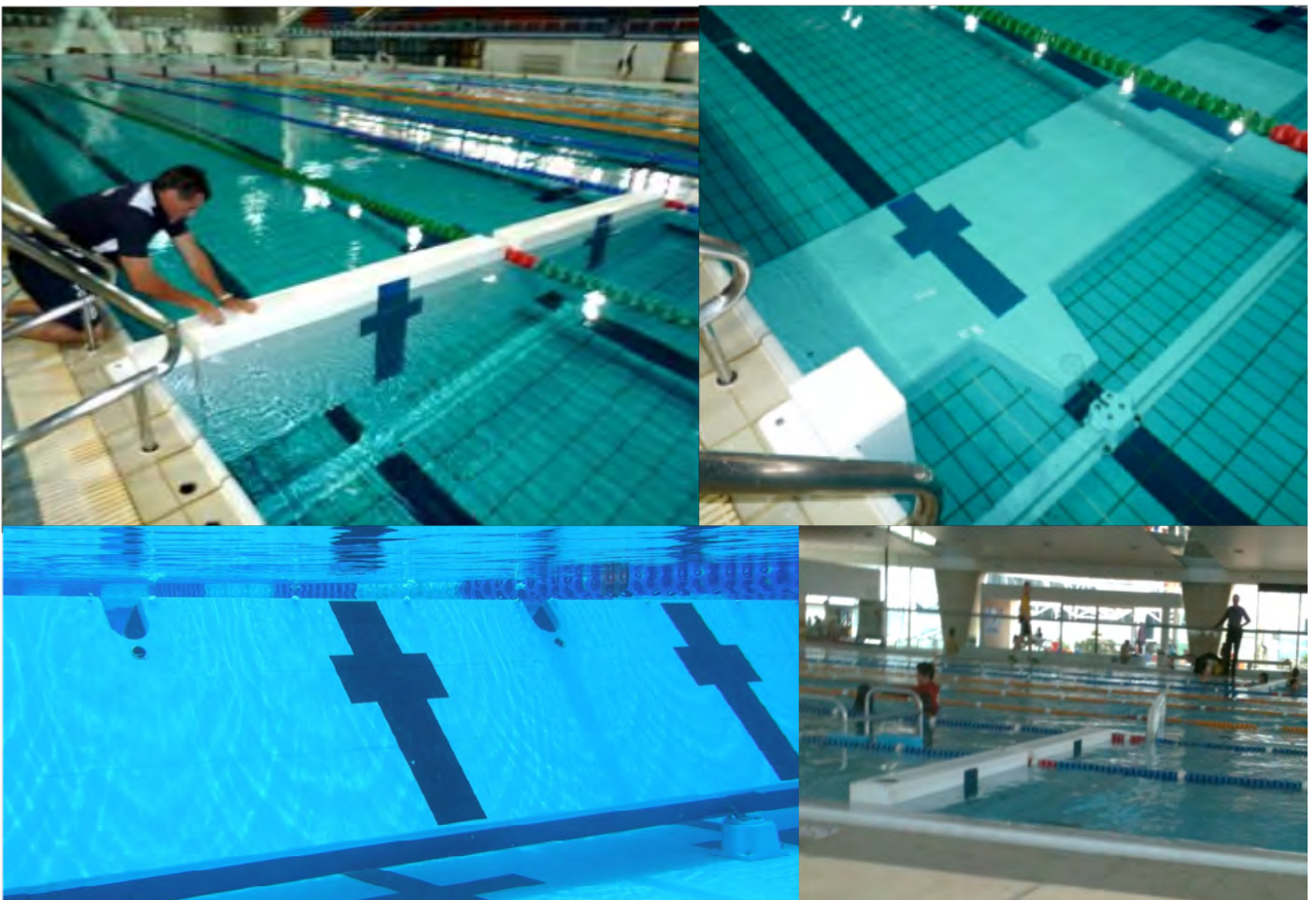
You still have a standard open pool and 50m lanes with the addition:

Your Optimum Programming is now available in a 10 lane 50m pool, which is

- 1 SwimWall up = 4 x 25m lanes plus 8 x 50m lanes
- 2 SwimWalls up = 8 x 25m lanes plus 6 x 50m lanes

Or in an 8 Lane pool, your options are:

- 1 SwimWall up = 4 x 25m and 6 x 50m lanes
- 2 SwimWalls up = 8 x 25m lanes and 4 x 50m lanes.



Submersible SwimWall

Configuration 2/ Two SwimWalls, Spanning Whole Pool Width

TWO SwimWalls, both half the width of the pool.

You still have a standard open pool and 50m lanes with the addition:

Your Optimum Programming is now available in a 10 lane 50m pool, which is

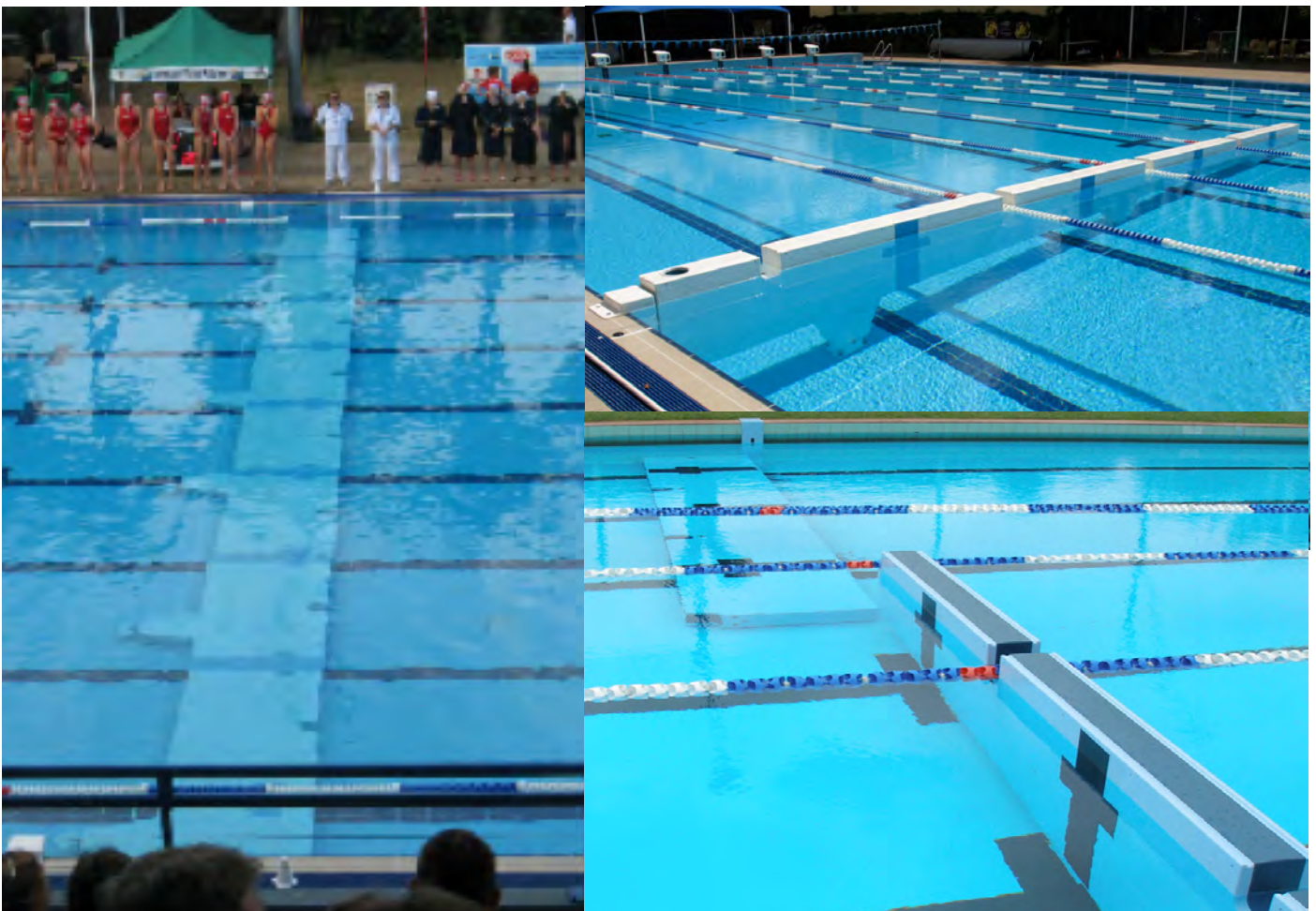
Program a: 1 SwimWall up = 10 x 25m lanes plus 5 x 50m lanes

Program b: 2 SwimWalls up = 20 x 25m lanes

Or in an 8 Lane pool, your options are:

Program a: 1 SwimWall up = 8 x 25m lanes plus 4 x 50m lanes

Program b: 2 SwimWalls up = 16 x 25m lanes





Submersible SwimWall



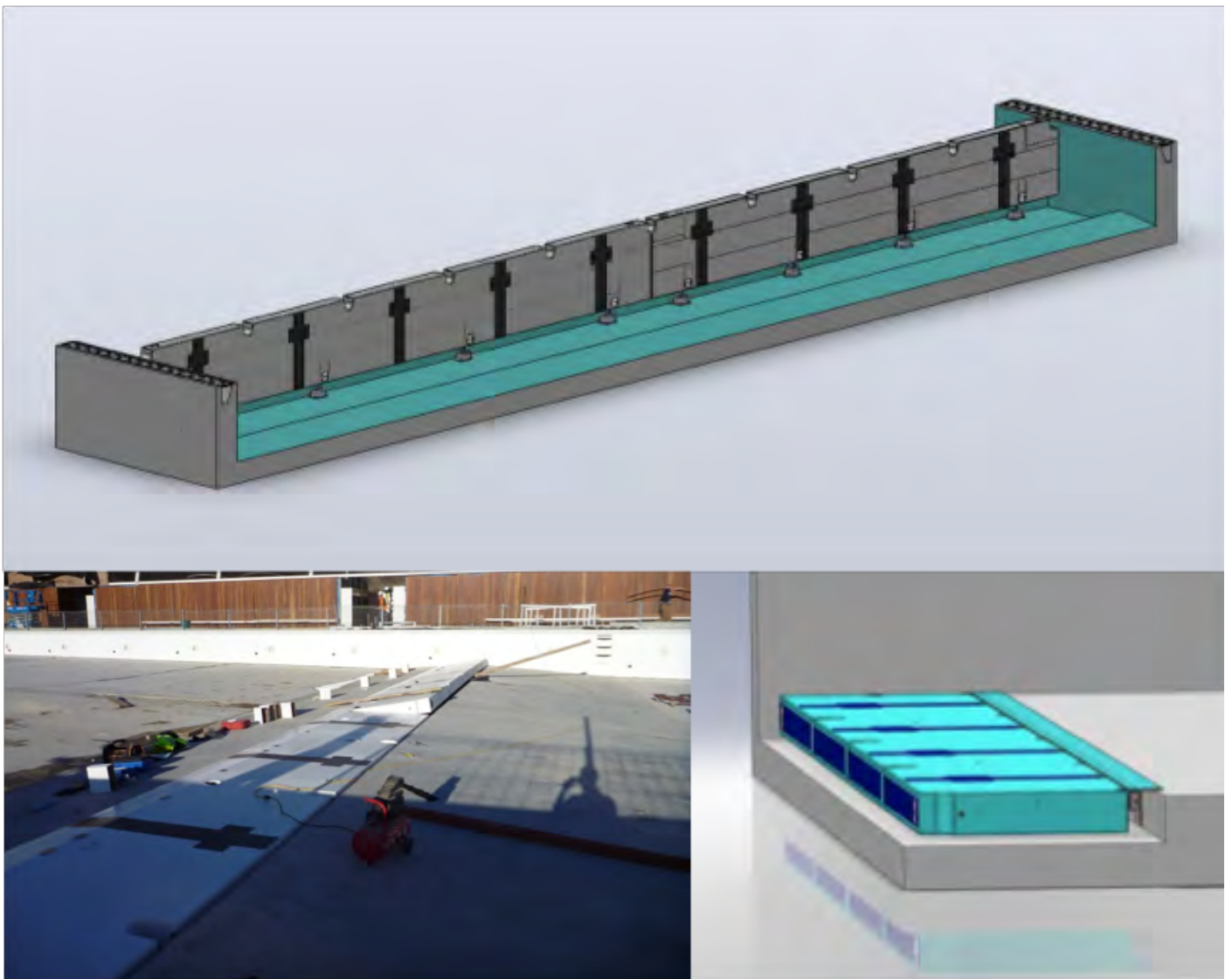
Configuration 3/ SwimWall Installation in New Pool (Rebate)

The SwimWall is installed into a Rebate in the pool floor.

A sliding cover fills in the Gap left between the SwimWall and the Pool floor.

This option is available to new Pools, where the SwimWall rebate can be designed into the pool floor to accommodate the SwimWall.

Please see images below for information.





Submersible SwimWall



SwimWall Operation:

The SwimWall sections are “inflated” with air to bring them into a vertical position. This is done by injecting air into special holes in the face of the sections. A trolley mounted air blower is wheeled from storage to pool side at one of the booms and a wand is inserted into this air inlet hole.

The boom will take about 40 seconds to assume a fully upright position and the operator then manually slides the locking pin into wall socket. This procedure is repeated for the second half if installed in two halves.

A stainless steel lever which is supplied will fit into a deck socket mounted in the top of the boom adjacent to the location pin access port. When the boom nears the up-right position, the lever is placed into the socket and manually lifted to complete the full movement to the up-right position allowing the locking pin to align and slid into place.

The design of the boom is such that the injected air itself slowly evacuates through the top of the boom but still giving the operator sufficient time to engage the locking pin. The total evacuation of the remaining air below water level takes around 7 minutes, thus ready to submerge when not required.

The lane ropes are left in place during boom raising and lowering thus avoiding unnecessary operator time as slots in the top of the boom accommodate the lane lines. Lowering of the boom is relatively simple; the locking pin is disengaged and the boom is simply pushed to one side with a foot and the boom’s self weight “sinks” it slowly to the floor in approximately 70 seconds.

Technical Specifications:

The SwimWall sections are 250mm in width. If installed in a rebate, a secondary sliding cover is supplied to conceal the pivoting hinge void and have a maximum height of 20mm with no sharp edges or gaps.

When installed as two separate sections, the SwimWall sections may be moved independent of each other, and have the ability to be locked together as one half when Vertical only. SwimWall sections submerge independently and come to rest on the pool floor/rebate without the need for fixings or added weight.

The SwimWall is constructed with GRP. The infused moulded surface finish are type ISO/NGP gelcoat, including target markings. The top surface of the SwimWall is slip resistant and the colour of targets are made to match the colour of existing lane time lines as closely as possible.

The SwimWall is suitable for Tumble turns and all fibreglass sections are produced to be rigid and adequate strength to withstand all horizontal and vertical loads imposed by normal use.

SwimWalls require minimal maintenance. In pool components require no maintenance, while the high quality FRP may be cleaned the same as surrounding pool surfaces.

Contact Information



Since 1972 Anti Wave products and designs have been exported to over 150 Countries around the world, and have set the standard for performance design and product quality.

Anti Wave has a widespread and growing global network of approved distributors and licensees, offering the most comprehensive and professional service and advice available.

Please contact us for more information at anti@anti.to

More information on all of our products can be found at www.anti.to



Anti Wave International Pty Ltd

www.anti.to

Anti Wave International Pty Ltd
 Address : 65 Twelfth Avenue, St Lucia QLD Australia 4067
 Anti Kajlich : +61 412 172 636 Email : anti@anti.to
 Australia - Phone : +61 07 38122 283 Email : anti@anti.to
 Web - www.anti.to

Anti Wave holds the following international Patents:
 2001285610, 7100219, 4048677. 01818714 and 2003/2920

With a global network of distributors and licensees around the world.

Contact us to find your closest reseller or if you would like to become a reseller in your country.

www.anti.to anti@anti.to